



**MEET IN**  
**OSTRAVA !!!**

Poznej nás blíž!

Čerstvě  
obalované kuře!



## CONVENTION!!!

The Moravian-Silesian Convention Bureau is based in Ostrava, the third largest city in the Czech Republic. Our team handles all aspects of MICE tourism in the Moravian-Silesian Region, a unique and dynamic destination in the heart of Europe. With amazing industrial locations, top-quality services and sufficient capacity to suit all needs, Ostrava and the Moravian-Silesian Region offer the perfect venue for professional and business events. Since 2012 the Moravian-Silesian Convention Bureau has been a member of the Czech Convention Bureau, Czech Tourism.

The three exclamation marks in the heading '**CONVENTION!!!**' are inspired by the logo of Ostrava, the capital city of the Moravian-Silesian Region. This motif perfectly captures the vitality, energy and self-confidence of Ostrava and the entire region. With a strategic location close to the Polish and Slovak borders, the Moravian-Silesian Region is known for its wonderful industrial architecture and the fierce local pride of its people. Leading figures in European culture have appreciated the region's magical energy – Igor Stravinsky gave concerts here and the composer Paul Hindemith pronounced that not being in Ostrava was like not having vitamin C.

### CONVENTION!!! OFFICE

We can

- find the perfect location for your congress, conference, seminar, or any other event
- arrange expert support
- offer you direct contacts, cooperation and partners
- sort out all necessary permits and formalities
- help you with all practicalities
- work together with you on bids
- show you the city and the region (site inspections, fam trips, press trips...)

We work closely with other Czech regions through our membership in the Czech Convention Bureau.

### CONTACT

City of Ostrava  
Economic Development Department  
T +420 599 443 079  
M +420 733 690 100  
E [convention@ostrava.cz](mailto:convention@ostrava.cz)  
W [www.conventionostrava.cz](http://www.conventionostrava.cz)



World-renowned stars  
of European civilization have left  
an indelible mark on our art,  
architecture, and culture - like  
the composer LEOŠ JANÁČEK,  
the psychologist SIGMUND FREUD,  
or the founder of genetics  
GREGOR MENDEL.

---

# HISTORY

Film-makers love our amazing scenery, with its extreme contrasts of cutting-edge modern architecture, industrial atmosphere, historic socialist realism from the 1950s, the red brickwork of old Vítkovice, monumental castles, and romantic chateaux. Designed by famous names such as HANS-GEORG ERHARDT - Golf Resort Ropice, or CAMILLO SITTE - architect of the unique Přívoz district.

---



# ARCHITECTURE



The industrial boom of the 19th century began when the Vitkovice ironworks were founded by CARDINAL ARCHBISHOP RUDOLF. The works were then acquired by SALOMON MEYER ROTHSCHILD of the famous banking family.

---

# INDUSTRIAL

Feel the spirituality of our churches, combining magnificence and powerful simplicity.

---

# MAJESTY





Find out why our vibrant, provocative arts and cultural scene has spread Ostrava's name far beyond Czech borders.

---

# CULTURE

Discover exciting, glamorous  
city life, with a fascinating mix  
of people in an open-minded  
atmosphere.

---

# COSMOPOLITAN







Experience the greenest city far and wide. Theatres, cafés, galleries, festivals. The famous Stodolní Street with over sixty bars, restaurants, pubs, and clubs.

---

# LIFESTYLE

Seven universities in the whole  
of the Region, more than 46 000  
students from different countries  
studying everything under the sun  
– Ostrava is a true student city.

---

# EDUCATION





We never leave you in any doubt about what we really think. Once you get to know us, you can be sure you have warm-hearted friends for life.

---

# PASSION

With a passion for entertainment,  
Ostrava's audiences inspire artists  
and performers to push their own  
personal boundaries.

---

*Alma*



# ENTERTAINMENT



Multiculturalism is in our blood.  
Folklore Without Borders, Polish  
Days, Days of Spanish Culture,  
Korean Days, French Autumn ...  
and so much more.

---

# MULTICULTURE

This structure was originally built in 1924 as a gas holder for the Vítkovice Ironworks, remaining in service until 1998. It survived bombing raids at the end of the Second World War, and has now been converted into a multifunctional auditorium known as the Gong, with a capacity of 1509 people. This imaginative conversion project sensitively preserves the historic core of the building inside a modern structure – making it an amazingly atmospheric venue!

---

# IDENTITY





**GONG**

# THE MORAVIAN-SILESIA REGION

The territory of the present-day Moravian-Silesian Region has been inhabited since prehistoric times, but it was not until the 12th century that permanent settlements began to appear in low-lying areas, near rivers, and along important trade and migration routes – the best-known being the Amber Route and the Salt Route. Castles and fortresses were built to defend these routes, and towns began to grow. Today this is one of Central Europe’s most important regions, incorporating part of the historic provinces of Moravia and Silesia in the north-east of the Czech Republic. Besides boasting a wide range of historic landmarks, the Region has a distinct culture and a strong sense of its own identity.

With 1 243 000 inhabitants, the Moravian-Silesian Region is the third most populous region in the Czech Republic. It lies around 300 kilometres from Prague, and can be reached from the capital in an hour by air (to Leoš Janáček Airport), 3 hours by train, or 4 hours by road. Situated at the meeting point of three countries – the Czech Republic, Poland and Slovakia – the Region occupies a strategic location within Central Europe, with easy access to Vienna, the Upper Silesian industrial conurbation in Poland, and the Slovak capital Bratislava.

The industrial boom of the 19th century began with the establishment of the Vítkovice ironworks by Cardinal Archbishop Rudolf. The works were then acquired by Salomon Meyer Rothschild of the famous banking family. Rothschild was a skilled businessman, and he was largely responsible for the boom in coal mining and the construction of the ‘Ferdinand Northern Railway’, which connected the Region with Vienna and points east. Later, the visionary businessman Paul Kupelwieser transformed Vítkovice into one of Europe’s most important producers of iron.

The Region’s history is also associated with some of the most prominent names in European civilization, who have left an indelible mark on culture, arts and learning. Jan Amos Komenský (usually known by his Latin name Comenius) was an educator, philosopher, writer and theologian, who wrote his most seminal works in the town of Fulnek during the 16th century. The biologist Johann Gregor Mendel, the founder of genetics, was born in the village of Hynčice near Odry. And the revolutionary psychologist and pioneer of psychoanalysis Sigmund Freud was a native of Příbor.

The Region was also home to some of the most influential architects of the late 19th and early 20th centuries, including Leopold Bauer from Krnov and Josef Maria Filip Olbrich from Opava. The composer Leoš Janáček – whose intensely personal operas and instrumental works are still among the most popular and respected works in the repertoire – was a native of the Region, and drew much of his inspiration from its culture. The poet Petr Bezruč, an uncompromising bard of the Silesian people, was also a local man.

Among the Region’s sporting heroes are the legendary athlete Emil Zátopek, winner of many Olympic medals, and the phenomenally successful tennis star Ivan Lendl. The singer-songwriter Jaromír Nohavica, a hugely popular figure on the international music scene, has created an outstanding body of work celebrating his home city Ostrava.

One of the Region’s most enchanting facets is its diverse natural beauty. The highest mountain ranges are the Jeseníky (highest peak Praděd) and the Beskydy (highest peak Lysá hora).

Recently the Region has become a popular golf destination, with a wide variety of courses to suit all levels of ability – from easy recreational courses to more challenging courses that regularly host the Czech Open and other international tournaments, all set against the beautiful backdrop of the Beskydy mountains or enchanting historical castles. Courses available: Čeladná, Ostravice, Šilheřovice, Kravaře, Ropice, and the newly completed Golf Resort Lipiny.





# THE CITY OF OSTRAVA!!!

The largest city in the Region and the third largest in the Czech Republic, Ostrava is located just 10 kilometres south of the Polish border and 50 kilometres west of Slovakia. The city lies at the meeting point of several rivers – the Odra, Ostravice, Opava and Lučina. Ostrava currently has around 306 000 inhabitants and is the administrative and cultural centre of the fastest-developing region in the country. Thanks to its industrial heritage, its strategic location and the strong local identity of its people, Ostrava is a uniquely charismatic Czech city.

Modern Ostrava offers visitors a huge range of cultural and sporting experiences, picturesque squares, distinctive architecture, excellent shopping, and a vibrant entertainment scene – plus excellent facilities for science, research, commerce, industry, and outstanding opportunities for investors.

Ostrava has a large and diverse range of theatres, museums, galleries and cinemas. The city is home to the internationally renowned Janáček Philharmonic Orchestra, and is the venue for the popular annual Colours of Ostrava music festival. The Ostrava Kamera Oko (‘Ostrava Camera Eye’) film festival celebrates the art of the cameraman. Among the many top events that have put the city on the sporting map is the annual international Golden Spike athletics meeting.

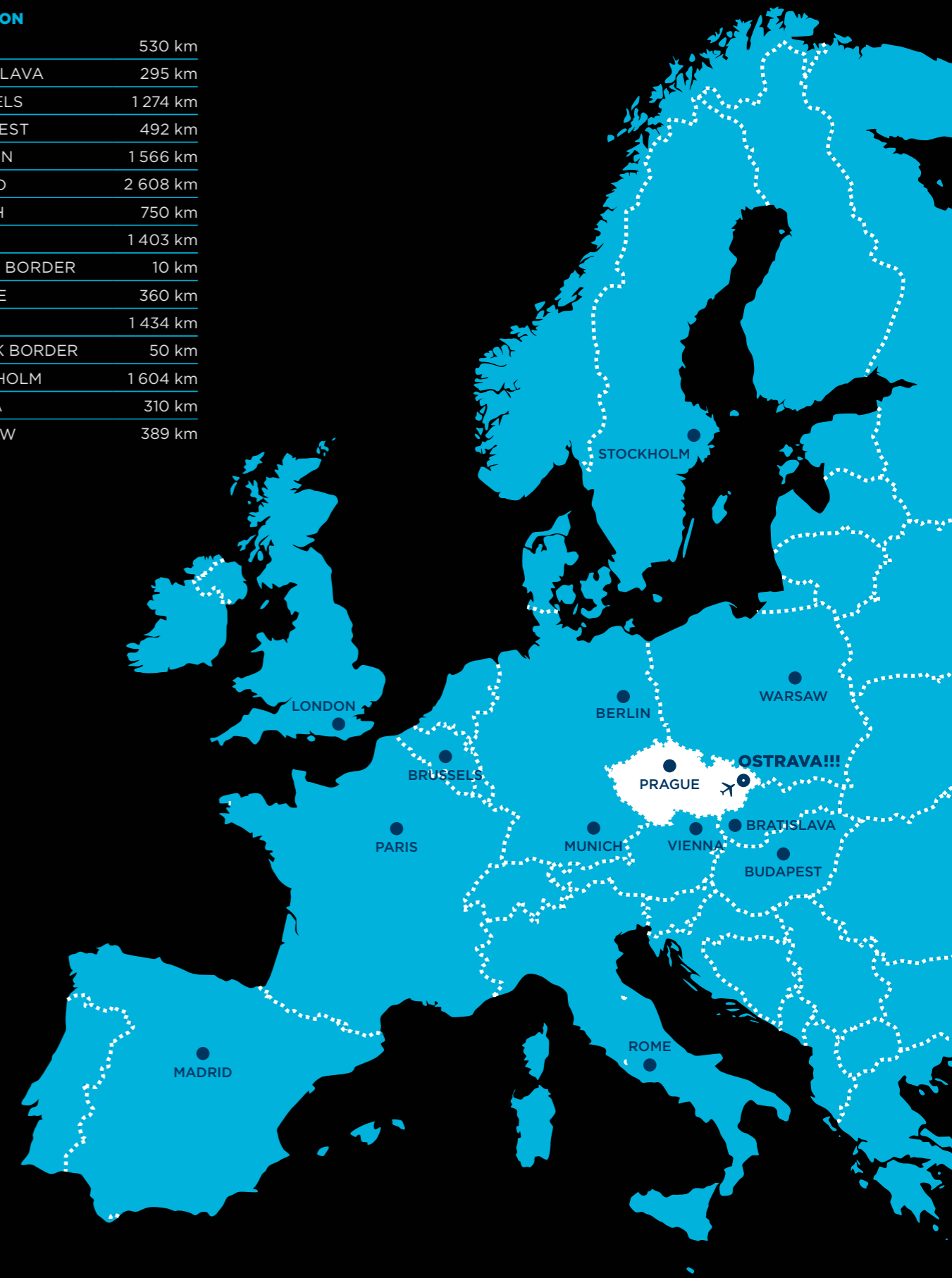
Ostrava is also a major university city, with the largest campus in the country with facilities for 40 000 students. The two main universities are the VŠB Technical University and the University of Ostrava. The city offers excellent facilities for research, including a state-of-the-art new supercomputing centre as part of the IT4Innovations project. Work began this year on brand-new labs for cutting-edge medical research. The city is also preparing a range of other cultural, educational and tourist facilities – new concert halls, the unique Interactive Science Museum, and a new embankment along the Ostravice river which will link up to the cycle route leading from Ostrava into the heart of the Beskydy mountains.

Countless film-makers, architects and other artists have been enchanted by the magic of this unique, proudly distinctive city. A vibrant and provocative arts and cultural scene has spread Ostrava’s name far beyond the borders of the Czech Republic.

Ostrava is an inspiration.

## LOCATION

|               |          |
|---------------|----------|
| BERLIN        | 530 km   |
| BRATISLAVA    | 295 km   |
| BRUSSELS      | 1 274 km |
| BUDAPEST      | 492 km   |
| LONDON        | 1 566 km |
| MADRID        | 2 608 km |
| MUNICH        | 750 km   |
| PARIS         | 1 403 km |
| POLISH BORDER | 10 km    |
| PRAGUE        | 360 km   |
| ROME          | 1 434 km |
| SLOVAK BORDER | 50 km    |
| STOCKHOLM     | 1 604 km |
| VIENNA        | 310 km   |
| WARSAW        | 389 km   |



# ACCOMMODATION

## CAPACITY ROUGH GUIDE

| OSTRAVA                                               |         |                  |                                     |     |     |    |    |     |    |    |    |   |  |
|-------------------------------------------------------|---------|------------------|-------------------------------------|-----|-----|----|----|-----|----|----|----|---|--|
| Clarion Congress Hotel Ostrava                        | Ostrava | +420 596 702 111 | www.clarioncongresshotelostrava.com | 420 | 140 | 55 | 42 | 15  | 8  | 30 | 20 | 6 |  |
| Harmony Club Hotel Ostrava                            | Ostrava | +420 596 652 111 | www.harmonyclub.cz                  | 100 | 50  | 20 | 12 | 8   |    |    |    |   |  |
| Hotel Best                                            | Ostrava | +420 603 848 115 | www.hotel-best.cz                   | 15  | 30  |    |    |     |    |    |    |   |  |
| Hotel Bonum                                           | Ostrava | +420 596 114 050 | www.hotel-bonum.cz                  | 60  | 50  | 8  |    |     |    |    |    |   |  |
| Hotel Brioni                                          | Ostrava | +420 599 500 000 | www.hotelbrioni.cz                  | 250 | 25  | 25 | 10 |     |    |    |    |   |  |
| Hotel Jan Maria                                       | Ostrava | +420 595 245 111 | www.jan-maria.cz                    | 70  | 60  | 20 | 40 | 100 |    |    |    |   |  |
| Hotel Maria                                           | Ostrava | +420 596 110 676 | www.hotel-maria.cz                  | 40  | 20  | 15 | 70 |     |    |    |    |   |  |
| Hotel Mercure Ostrava Center                          | Ostrava | +420 595 606 600 | www.mercureostrava.cz               | 100 | 100 | 45 | 56 | 56  |    |    |    |   |  |
| Hotel Mexiko                                          | Ostrava | +420 596 244 444 | www.hotelmexiko.cz                  | 20  | 80  |    |    |     |    |    |    |   |  |
| Hotel Puls                                            | Ostrava | +420 596 790 611 | www.arena-vitkovice.cz              | 30  |     |    |    |     |    |    |    |   |  |
| Hotel Sport Club                                      | Ostrava | +420 596 977 314 | www.hotelsportclub.cz               | 100 | 30  | 40 |    |     |    |    |    |   |  |
| Hotel VISTA Ostrava                                   | Ostrava | +420 597 221 111 | www.hotelvista.cz                   | 230 | 80  | 50 | 50 | 50  | 50 |    |    |   |  |
| Hotel Zámek Poruba                                    | Ostrava | +420 596 923 094 | www.zamek-poruba.cz                 | 150 | 34  | 17 |    |     |    |    |    |   |  |
| MaMaison Business & Conference Hotel Imperial Ostrava | Ostrava | +420 599 099 779 | www.mamaison.com/imperial           | 300 | 78  | 78 | 12 | 12  | 12 |    |    |   |  |
| Park Inn by Radisson Hotel Ostrava                    | Ostrava | +420 595 195 000 | www.parkinn.cz/hotel-ostava         | 280 | 90  | 30 | 20 | 10  | 10 |    |    |   |  |
| Ruby Blue Hotel & Restaurant                          | Ostrava | +420 597 609 111 | www.rubyblue.cz                     | 50  | 20  | 20 |    |     |    |    |    |   |  |
| Zámek Zábřeh                                          | Ostrava | +420 554 819 411 | www.zamek-zabreh.cz                 | 25  | 60  | 60 |    |     |    |    |    |   |  |

## THE BESKYDY MOUNTAINS

|                          |                      |                  |                        |     |     |     |    |     |     |    |    |    |  |
|--------------------------|----------------------|------------------|------------------------|-----|-----|-----|----|-----|-----|----|----|----|--|
| Beltine Forest Hotel     | Ostravice            | +420 604 211 845 | www.beltinehotel.cz    | 80  | 25  | 70  | 60 | 15  | 8   | 30 | 20 | 8  |  |
| Hotel & Caffè Silesia    | Frýdek-Místek        | +420 558 621 949 | www.hotelsilesia.cz    | 45  | 45  | 15  | 20 | 8   |     |    |    |    |  |
| Hotel AFRIKA             | Frýdek-Místek        | +420 595 534 800 | www.hotelafrika.cz     | 56  | 80  |     |    |     |     |    |    |    |  |
| Hotel AGH                | Rožnov pod Radhoštěm | +420 571 625 666 | www.hotel-agh.cz       | 46  | 64  | 30  | 10 |     |     |    |    |    |  |
| Hotel Eroplán            | Rožnov pod Radhoštěm | +420 571 648 014 | www.hoteleroplan.cz    | 30  | 200 | 100 | 25 |     |     |    |    |    |  |
| Hotel Jaškovská Krčma    | Těrlicko             | +420 602 269 734 | www.jaskovskakrcma.cz  | 45  | 78  | 35  | 20 | 12  | 60  |    |    |    |  |
| Hotel Prosper            | Čeládná              | +420 558 440 311 | www.hotel-prosper.cz   | 150 | 35  | 35  | 15 | 30  |     |    |    |    |  |
| Hotel Ráztoka            | Trojanovice          | +420 556 835 869 | www.rasztoka.cz        | 100 | 40  | 25  | 25 | 600 | 110 |    |    |    |  |
| Horský Hotel Sepetná     | Ostravice            | +420 558 682 108 | www.sepetna.cz         | 120 | 220 | 100 | 80 | 80  | 76  | 64 | 58 | 26 |  |
| Hotel Troyer             | Trojanovice          | +420 556 802 007 | www.troyer.cz          | 110 | 35  | 40  | 52 | 30  | 30  |    |    |    |  |
| Miura Hotel              | Čeládná              | +420 558 761 100 | www.miura.cz           | 72  | 8   | 30  |    |     |     |    |    |    |  |
| Wellness Hotel Energetic | Rožnov pod Radhoštěm | +420 571 629 109 | www.hotel-energetic.cz | 120 | 30  | 40  | 10 | 34  | 100 |    |    |    |  |
| Spa Hotel Lanterna       | Velké Karlovice      | +420 571 477 300 | www.lanterna.cz        | 30  | 40  | 15  | 30 |     |     |    |    |    |  |

# ACCOMMODATION

| THE JESENÍKY MOUNTAINS |                    |                  |                        |     |     |     |    |     |    |    |    |   |  |
|------------------------|--------------------|------------------|------------------------|-----|-----|-----|----|-----|----|----|----|---|--|
| Hotel Avalanche        | Dolní Moravice     | +420 554 254 099 | www.avalanche-hotel.cz | 200 | 100 | 80  | 60 | 25  | 20 | 15 | 10 | 8 |  |
| Hotel Cvilín           | Krnov              | +420 554 625 255 | www.cvilin.cz          | 150 | 60  | 30  |    |     |    |    |    |   |  |
| Spa Karlova Studánka   | Karlova Studánka   | +420 554 798 263 | www.k.studanka.cz      | 109 | 111 | 104 | 48 | 43  | 19 | 32 |    |   |  |
| Larisch Villa          | Krnov              | +420 606 668 668 | www.larischovavila.cz  | 30  | 50  | 8   |    |     |    |    |    |   |  |
| Mountain Hotel Vidly   | Vrbno pod Pradědem | +420 554 771 004 | www.vidly.cz           | 50  | 25  | 25  | 10 |     |    |    |    |   |  |
| Chata Kopřivná         | Malá Morávka       | +420 554 273 152 | www.koprivna.cz        | 88  | 60  | 20  | 40 | 100 |    |    |    |   |  |
| Mountain Hotel Brans   | Malá Morávka       | +420 554 273 045 | www.brans.cz           | 80  | 20  | 15  | 70 |     |    |    |    |   |  |

## TESIN SILESIA

|                |                     |                  |                      |     |     |     |    |    |    |    |     |  |  |
|----------------|---------------------|------------------|----------------------|-----|-----|-----|----|----|----|----|-----|--|--|
| Hotel Dakol    | Petrovice u Karviné | +420 596 361 914 | www.hoteldakol.cz    | 100 | 100 | 100 | 30 |    |    |    |     |  |  |
| Hotel Steel    | Třinec              | +420 556 200 190 | www.hotelsteel.cz    | 120 | 70  | 18  |    |    |    |    |     |  |  |
| Hotel Vitality | Vendryně            | +420 595 530 611 | www.hotelvitality.cz | 150 | 50  | 25  | 25 | 25 | 16 | 40 | 30  |  |  |
| Cultural House | Karviná             | +420 596 376 231 | www.darkov.cz        | 100 | 46  | 24  | 18 |    |    |    |     |  |  |
| Darkov Spa     | Karviná             | +420 596 372 211 | www.darkov.cz        | 120 | 12  | 25  | 66 | 50 | 35 | 15 | 120 |  |  |

## OPAVA SILESIA

|                        |                     |                  |                              |     |     |     |     |     |     |    |    |  |  |
|------------------------|---------------------|------------------|------------------------------|-----|-----|-----|-----|-----|-----|----|----|--|--|
| Hotel Golf Šilheřovice | Šilheřovice         | +420 777 007 937 | www.hotelgolfshilherovice.cz | 75  | 50  | 40  | 40  | 100 |     |    |    |  |  |
| Hotel Belaria          | Hradec nad Moravicí | +420 553 612 323 | www.belaria.cz               | 40  | 70  | 450 | 450 |     |     |    |    |  |  |
| Hotel Buly Aréna       | Kravaře             | +420 605 111 000 | www.bulyarena.cz             | 100 | 30  | 640 | 100 | 100 | 100 | 50 |    |  |  |
| Hotel Červený zámek    | Hradec nad Moravicí | +420 553 783 021 | www.cervenyzamek.cz          | 240 | 240 | 40  | 20  | 20  | 20  | 40 | 30 |  |  |
| Hotel Iberia           | Opava               | +420 553 776 700 | www.hoteliberia.cz           | 60  | 40  | 37  | 18  |     |     |    |    |  |  |
| Hotel Koruna           | Opava               | +420 553 621 132 | www.hotelkoruna.cz           | 90  | 110 | 90  | 18  |     |     |    |    |  |  |
| Hotel Sonáta           | Hradec nad Moravicí | +420 731 653 468 | www.hotelsonata.cz           | 25  | 60  | 40  | 40  | 100 |     |    |    |  |  |

## THE ODRA BASIN (POODŘÍ) REGION

|                           |                          |                  |                               |    |    |     |  |  |  |  |  |  |  |
|---------------------------|--------------------------|------------------|-------------------------------|----|----|-----|--|--|--|--|--|--|--|
| Hotel Sýpka               | Petřvald u Nového Jičína | +420 596 811 285 | www.hotelsypka.cz             | 16 | 50 | 450 |  |  |  |  |  |  |  |
| Hotýlek Antler            | Studénka                 | +420 739 633 434 | www.penzionantler.estranky.cz | 20 | 12 |     |  |  |  |  |  |  |  |
| Birthplace of J.G. Mendel | Vražné                   | +420 556 730 105 | www.mendel-rodnydum.vrazne.cz | 50 |    |     |  |  |  |  |  |  |  |

# CONFERENCES AND EVENTS

(CAPACITY LESS THAN 500 SEATS)

|                                       |                    |                  |                             |         |     |     |     |     |     |     |     |
|---------------------------------------|--------------------|------------------|-----------------------------|---------|-----|-----|-----|-----|-----|-----|-----|
| Academy Seminar Centre                | Ostrava            | +420 595 134 255 | www.centrumakademie.cz      | 260     | 110 | 110 | 50  | 50  | 50  | 232 | 188 |
| Antonín Dvořák Theatre                | Ostrava            | +420 596 276 113 | www.ndm.cz                  | 517     | 60  | 25  | 80  |     |     |     |     |
| Akord Cultural Centre, Ostrava-Zábřeh | Ostrava            | +420 596 762 511 | www.dk-akord.cz             | 21      | 12  | 500 | 250 | 200 | 70  |     |     |
| Bílovec Cultural Centre               | Bílovec            | +420 556 414 219 | www.bilovec.cz              | 400     | 70  | 80  |     |     |     |     |     |
| Black Meadow Exhibition Centre        | Ostrava            | +420 596 167 112 | www.cerna-louka.cz          | 25 000* |     |     |     |     |     |     |     |
| City of Ostrava Cultural Centre       | Ostrava            | +420 597 489 111 | www.dkmoas.cz               | 629     | 576 | 200 | 115 | 40  | 15  | 20  | 50  |
| Church of the Holy Spirit             | Krnov              | +420 554 614 706 | www.infokrnov.cz            | 120     |     |     |     |     |     |     |     |
| ČEZ Aréna                             | Ostrava            | +420 606 744 207 | www.arena-vitkovice.cz      | 12 500  |     |     |     |     |     |     |     |
| Flemmich Villa                        | Krnov              | +420 554 614 706 | www.muzeumkrnov.cz          | 30      | 50  |     |     |     |     |     |     |
| Good Brain Activity Centre            | Vrbno pod Pradědem | +420 554 295 195 | www.strecha-vrbno.cz        | 100     | 50  |     |     |     |     |     |     |
| House of Art (GVUO)                   | Ostrava            | +420 596 112 566 | www.gvuo.cz                 | 100     | 50  | 30  |     |     |     |     |     |
| House of Art Opava                    | Opava              | +420 553 791 947 | www.oko-opava.cz            | 300     |     |     |     |     |     |     |     |
| Jiří Myron Theatre                    | Ostrava            | +420 596 276 113 | www.ndm.cz                  | 623     |     |     |     |     |     |     |     |
| Klimkovice Sanatoria                  | Klimkovice         | +420 556 422 111 | www.sanklim.cz              | 200     | 20  | 29  | 100 | 90  |     |     |     |
| Kravaře Chateau                       | Kravaře            | +420 553 671 201 | www.kravare.cz              | 150     | 150 | 150 |     |     |     |     |     |
| Kunín Chateau                         | Kunín              | +420 603 538 106 | www.zamek.kunin.cz          | 100     | 50  |     |     |     |     |     |     |
| Lanek Park - Mining Museum            | Ostrava            | +420 596 131 803 | www.lanekpark.cz            | 600     | 50  | 70  |     |     |     |     |     |
| Lower Vitkovice Area                  | Ostrava            | +420 724 267 699 | www.dolnoblavstvitkovice.cz | 50 000* |     |     |     |     |     |     |     |
| Luna Cinema                           | Ostrava            | +420 596 751 712 | www.kzoz.cz                 | 598     | 50  |     |     |     |     |     |     |
| Michal Colliery                       | Ostrava            | +420 596 231 151 | www.dul-michal.cz           | 200     | 150 | 30  | 20  | 20  | 100 |     |     |
| Minorite Monastery                    | Opava              | +420 553 717 783 | www.okpb.cz                 | 200     |     |     |     |     |     |     |     |
| Moravian Chapel                       | Opava              | +420 553 791 947 | www.oko-opava.cz            | 70      |     |     |     |     |     |     |     |
| Mountain Hotel Brans                  | Malá Morávka       | +420 554 273 045 | www.brans.cz                | 80      |     |     |     |     |     |     |     |
| Mountain Hotel Vidly                  | Vrbno pod Pradědem | +420 554 771 004 | www.vidly.cz                | 60      |     |     |     |     |     |     |     |
| Municipal Building                    | Opava              | +420 553 791 947 | www.oko-opava.cz            | 50      | 100 | 150 |     |     |     |     |     |
| Poklad Cultural Centre                | Ostrava            | +420 596 940 021 | www.dkpoklad.cz             | 150     | 500 | 250 |     |     |     |     |     |
| Radost Cultural Centre                | Havířov            | +420 777 767 083 | www.mkshavirov.cz           | 200     | 100 |     |     |     |     |     |     |
| Rothschild Palace                     | Ostrava            | +420 596 967 954 | www.rothschild-palace.cz    | 200     | 60  | 60  | 20  |     |     |     |     |
| Silesian Ostrava Castle               | Ostrava            | +420 596 167 112 | www.cerna-louka.cz          | 80      | 300 | 200 | 250 | 20  |     |     |     |
| Silesian University in Opava          | Opava              | +420 553 684 606 | www.slu.cz                  | 130     | 40  | 32  | 32  |     |     |     |     |
| Spa Karlova Studánka                  | Karlova Studánka   | +420 554 798 263 | www.k.studanka.cz           | 200     | 120 | 70  | 50  | 20  | 20  |     |     |
| Šilheřovice Chateau                   | Šilheřovice        | +420 777 007 937 | www.zameksilherovice.cz     | 100     | 40  | 20  | 40  | 60  | 40  |     |     |
| Tatra Kopřivnice                      | Kopřivnice         | +420 725 853 462 | www.tatramuseum.cz          | 150     |     |     |     |     |     |     |     |
| VŠB - Technical University            | Ostrava            | +420 603 565 945 | www.vsb.cz                  | 465     | 150 | 88  | 85  | 33  | 50  |     |     |

\* outdoor capacity

# CONGRESSES

|                                |         |                  |                             |       |       |     |     |       |       |     |     |
|--------------------------------|---------|------------------|-----------------------------|-------|-------|-----|-----|-------|-------|-----|-----|
| GONG Lower Vitkovice Area      | Ostrava | +420 724 267 678 | www.dolnoblavstvitkovice.cz | 1 509 | 1 000 | 350 | 250 | 1 000 | 1 000 | 6x  | 10x |
| CineStar                       | Ostrava | +420 737 227 761 | www.cinestar.cz/ostrava     | 340   | 260   | 260 | 240 | 240   | 232   | 232 | 188 |
| Cinema City                    | Ostrava | +420 255 742 021 | www.cinematicity.cz         | 311   | 155   | 171 | 171 | 155   | 81    | 70  | 81  |
| ČEZ Aréna                      | Ostrava | +420 606 744 207 | www.arena-vitkovice.cz      | 1 500 |       |     |     |       |       |     |     |
| Antonín Dvořák Theatre         | Ostrava | +420 596 276 113 | www.ndm.cz                  | 517   | 60    | 25  | 80  |       |       |     |     |
| Jiří Myron Theatre             | Ostrava | +420 596 276 113 | www.ndm.cz                  | 623   |       |     |     |       |       |     |     |
| Hala Opava, a.s.               | Opava   | +420 553 759 340 | www.hala-opava.cz           | 2 898 | 143   |     |     |       |       |     |     |
| Lanek Park - Mining Museum     | Ostrava | +420 596 131 803 | www.lanekpark.cz            | 600   | 50    | 70  |     |       |       |     |     |
| Black Meadow Exhibition Centre | Ostrava | +420 596 167 112 | www.cerna-louka.cz          | 1 000 | 1 000 | 400 | 600 | 110   |       |     |     |
| VŠB-TU Ostrava (Aula)          | Ostrava | +420 597 325 335 | www.vsb.cz                  | 465   | 150   | 88  | 85  | 33    | 50    |     |     |

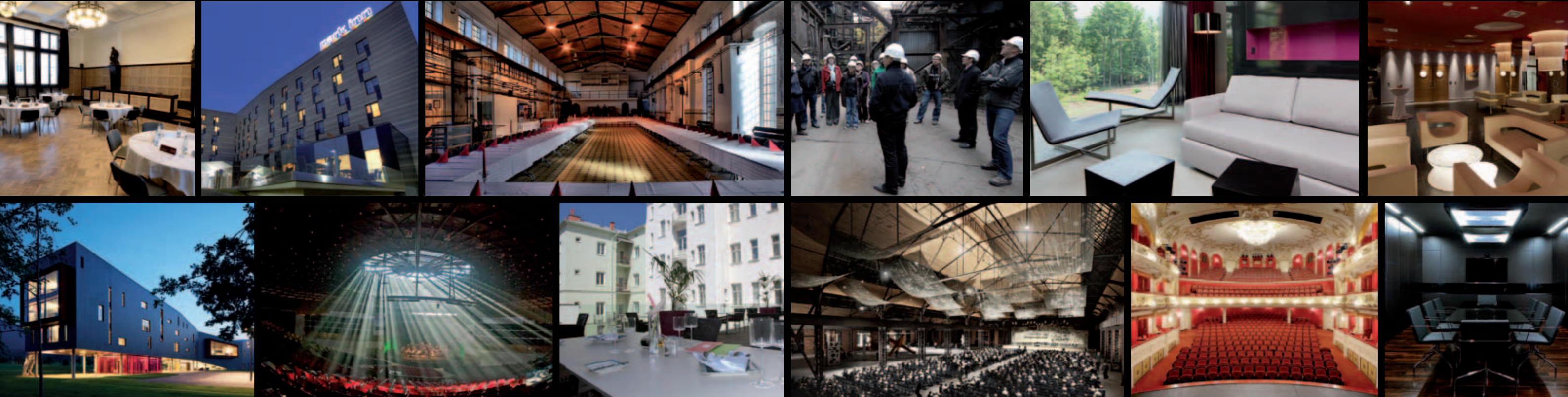
Capacities mentioned above are only a rough guide, please contact us or the venue for exact numbers and seating arrangement.

## CONTACT

City of Ostrava  
 Economic Development Department  
 T +420 599 443 079  
 M +420 733 690 100  
 E convention@ostrava.cz  
 W www.conventionostrava.cz

[www.conventionostrava.cz](http://www.conventionostrava.cz)

# VARIABILITY





**Czech**Tourism



Czech  
Convention Bureau

**CONVENTION!!!**



All rights reserved: Czech Convention Bureau, Czech Tourism / Graphic Design: IanDerson advertising / Art photography: Tamara Černá SofíG / February 2013  
In cooperation with Czech Tourism - Czech Convention Bureau published by Moravian-Silesian Convention Bureau.